

Project Name: Yun House (Yun Lu) Boutique Eco - resort	Area: 3,000 m ²	Type: Restoration and New Building Addition	New Architecture Addition: Atelier Liu Yuyang Architects	Restoration Company: PUYAN Construction
Location: Xinping Village at Yangshuo county, Guilin, China	Guest Rooms: 23 rooms	Architecture Renovation & Interior Design: Ares Partners	Landscaping & Lighting Design: Ares Partners	Completion: 2013.09-2015.02 Construction Cost: €2,100,000



Yun House is a boutique eco-resort nestled within a village at north eastern part of Yangshuo which situated along the dramatic landscape of the Li River. The site consists of nine renovated old farm houses and one new addition which functions as an all-day dining restaurant for hotel guests. Taking on a sensitive approach to the local culture with villagers still living nearby, the overall planning and landscape design blends into the original village structure without creating new boundary conditions to the villagers. The rammed earthed buildings were retrofitted to accommodate refreshing and uncompromisingly contemporary living, while the new restaurant addition adopts an understated presence with the use of steel frame, glass pivot doors and windows, in contrast with the locally sourced rough-cut stone blocks, charcoal treated wooden louvers and terra-cotta roof tiles to provide a rich tactile experience. The spatial dialogue and sense of continuity between the old and the new buildings maintain an order of symbiosis between the foreign (hotel) and the local (village). The same design principle extends into the interior space of the hotel. The dialogue between people, space, light and landscape is well thought out. The typical layout of the vernacular house here is a three bay structure with a double height volume in the middle bay. Each typical building consists of four guest rooms with a shared living and hangout space in the center. Bamboo, wood, galvanized steel, concrete finishes and pebble washed stones are main materials being used in interior spaces. Most of wood beams and existing wooden doors are being refurbished and reused on the project.

YUN HOUSE (YUN LU) BOUTIQUE ECO-RESORT



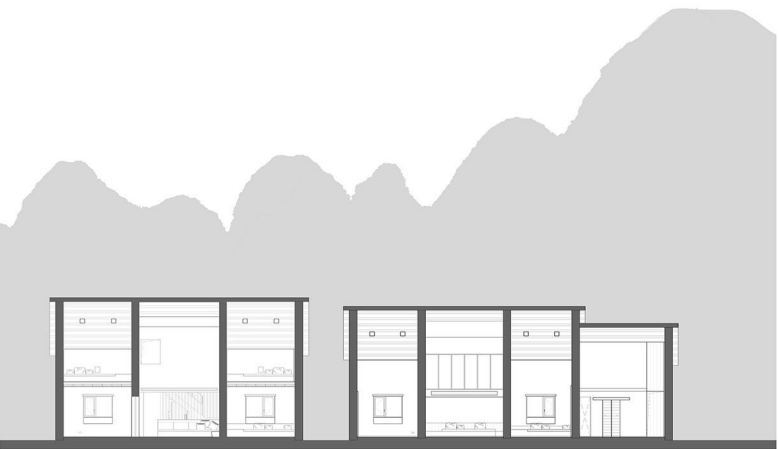
Existing Photo





© ARES PARTNERS 建筑设计

North Elevation Bldg E FG
E栋 FG楼北立面



© ARES PARTNERS 建筑设计

Bldg E FG Section 1
E栋 FG楼 剖面 1



© ARES PARTNERS 建筑设计

South Elevation Bldg E FG
E栋 FG楼南立面



© ARES PARTNERS 建筑设计

Bldg E FG Section 2
E栋 FG楼 剖面 2



© ARES PARTNERS 建筑设计

Bldg A&E Section 3
A&E栋 剖面 3



ARES Partners begins with an insistence on design excellence and comprehensive engagement. We believe that a small and professional practice will flourish outside the confines of a large corporation and provide better service to its clients. The philosophy of the practice is to seek innovative and functional design solutions to each challenge. Through the rendering of space, light and natural materials complement a project's programmatic needs and spatial characteristics. In additions, urban context, building technology, craft and details along with meaningful client dialogue, work to meet the budget and schedule as primary parts of the process. We believe that authenticity, creativity and effective execution and proficient management are the keys to a successful project.

Helen Wang is the founding partner of ARES Partners since 2007. With over 15 years of professional experience in Architectural and Interior Design, she has commanded a lead role on projects from design conceptual phase to construction completion. These projects range from institutional projects, mixed-use commercial complex. Hospitality and residential works, She is actively involved in all aspect of design process. Her work has encompassed a broad spectrum of projects include Boutique Hotel in Guilin, holiday resort hotel in Zhejiang, residential interior of villa in SheShan Shanghai, Office interior for One Center headquarter in Pudong, high-end retail interiors as well as Museum and Art Gallery projects.

